

# NUCLEAR MEDICINE

*offers diagnostic testing of organs such as the heart, kidneys, lungs, and more*

## WHAT IS A NUCLEAR MEDICINE SCAN?

A nuclear medicine (NM) scan is a type of diagnostic imaging that uses small amounts of radioactive materials or tracers to diagnose a variety of diseases including heart disease. These studies often provide information that we are not able to get from other types of imaging. Nuclear Medicine scans allow us to evaluate the function of a number of organs including the lungs, heart, stomach, kidneys, and gallbladder. Furthermore, NM scans allow us to monitor certain types of cancer; detect a number of bone abnormalities such as fractures, arthritis or tumors; and evaluate certain infections.

## TYPES OF NM SCANS OFFERED AT GIFFORD MEDICAL CENTER

- Bone Scans
- Gallium Studies
- Gastric Emptying Study
- GI Bleed Study
- Hepatobiliary Scan
- Liver/Spleen Study
- Lung Scan
- Lymphoscintigraphy
- Myocardial Perfusion
- Meckel's Scan
- MUGA Scans
- Renal Scans
- WBC Studies – In111 or Tc99m



## FREQUENTLY ASKED QUESTIONS

### ARE THERE ANY SIDE EFFECTS FROM THE TRACER?

Some patients will get a metallic taste in their mouth after receiving the tracer, otherwise you should not notice any side effects. NM tracers do not contain any dye or iodine.

### HOW DO I PREPARE FOR MY NUCLEAR MEDICINE EXAM?

When your appointment is scheduled, you will receive instructions on how to prepare for your exam (these instructions vary for each type of study). Prior to your exam one of our nuclear medicine technologists will call you to confirm that you have received and understand all the instructions and to answer any questions you may have.

If there is any chance that you may be pregnant or if you are breastfeeding, talk to your doctor before scheduling your exam.

### ARE THERE ANY RESTRICTIONS FOLLOWING MY NUCLEAR MEDICINE SCAN?

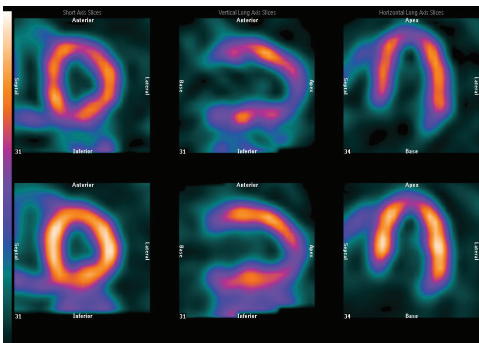
Usually there are no restrictions following diagnostic nuclear medicine scans. Sometimes it can be beneficial to increase your fluid intake afterwards to help the tracer pass through the body faster.

### WHAT IS SPECT IMAGING?

SPECT (Single photon emission computed tomography) is a sophisticated type of NM scanning technology that utilizes computer processing to provide three dimensional (3D) images.

### HOW DO I FIND OUT MY RESULTS?

All of our nuclear medicine studies are read on site by one of our board certified radiologists. A report will be sent to the ordering provider and your provider will discuss these results with you.



## MYOCARDIAL PERFUSION IMAGING (MPI)

Also known as a nuclear stress test, MPI uses SPECT imaging of a patient's heart before and after exercise to determine the blood flow through the coronary arteries and the heart muscle.

## QUESTIONS

If you have any questions about our services, an upcoming appointment, or if you need to schedule an appointment, please call and speak with one of our nuclear medicine technologists at the number below.

Want to know more about Nuclear Medicine? Try one of the following resources:

- The Society of Nuclear Medicine and Molecular imaging [www.snmmi.org](http://www.snmmi.org)
- Radiology Info at [www.radiologyinfo.org](http://www.radiologyinfo.org)

## OUR DEPARTMENT

Gifford's Nuclear Medicine Department is proud to be accredited through the American College of Radiology (ACR) and we voluntarily adhere to their strict guidelines. You can visit their website at [www.acr.org](http://www.acr.org).



To speak with a provider or schedule an appointment call: **728-2259**

[www.giffordhealthcare.org](http://www.giffordhealthcare.org)